



$$13 = \frac{6!}{3!3!} : F \times \Delta \times F = 120$$

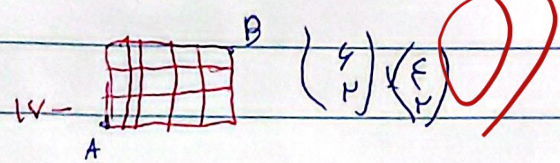
$$14 = \frac{6!}{2!2!2!} : F \times V \times V \times F = 180$$

$$15 = \frac{6!}{3!2!1!}$$

$$16 = \frac{6!}{2!1!1!1!1!1!}$$

$$17 = 111233$$

- 111 → 1
- 112 → 2
- 113 → 3
- 123 → 6
- 133 → 3
- 233 → 3



$$18 = \frac{6!}{2!1!1!1!1!1!}$$

$$19 = \frac{6!}{2!2!1!1!1!} \rightarrow 180$$

$$20 = \frac{10}{2!} + 1 + 2 = 24$$